

SG1 C BP

KÄRCHER

North America

Gum Remover

Operating instructions (ENG)

MODEL: 1.013-104.0
SG1 C BP



WARNING:

This product and accessories may contain a chemical known to the State of California to cause cancer and birth defects or other reproductive harm.

For more information about this regulation: www.P65Warnings.ca.gov



86385190-H 07/20/18

Model: _____

Date of Purchase: _____

Serial Number: _____

Dealer: _____

Address: _____

Phone Number: _____

Sales Representative: _____

Warranty Registration

Thank you for purchasing a Kärcher North America product. Warranty registration is quick and easy. Your registration will allow us to serve you better over the lifetime of the product.

To register your product go to :

<http://warranty.karcherna.com/>

For customer assistance:

1-800-444-7654

KÄRCHER



Machine Data Label 2
Table of Contents 3
How To Use This Manual 4

Safety

IMPORTANT SAFETY INSTRUCTIONS 5
HAZARD INTENSITY LEVEL 6

Operations

Pre-Run Set Up. 8
Charging the Machine. 9
Adjusting the Machine. 10
Cleaning Gum. 10
End of Use 11

Parts

Components - Case 14
Gas 16
Fluid System 18
Serial Number. 20

How To Use This Manual

This manual contains the following sections:

- How to Use This Manual
- Safety
- Operations
- Parts

The HOW TO USE THIS MANUAL section will tell you how to find important information for ordering correct repair parts.

Parts may be ordered from authorized dealers. When placing an order for parts, the machine model and machine serial number are important. Refer to the MACHINE DATA box which is filled out during the installation of your machine. The MACHINE DATA box is located on the inside of the front cover of this manual.

Model: _____
Date of Purchase: _____
Serial Number: _____
Dealer: _____
Address: _____
Phone Number: _____
Sales Representative: _____

The model and serial number of your machine is located inside of the backpack on the front case.



The SAFETY section contains important information regarding hazardous or unsafe practices of the machine. Levels of hazards are identified that could result in product damage, personal injury, or severe injury resulting in death.

The OPERATIONS section is to familiarize the operator with the operation and function of the machine.

The PARTS LIST section contains assembled parts illustrations and corresponding parts list. The parts lists include a number of columns of information:

- **REF** – column refers to the reference number on the parts illustration.
- **PART NO.** – column lists the part number for the part.
- **QTY** – column lists the quantity of the part used in that area of the machine.
- **DESCRIPTION** – column is a brief description of the part.
- **SERIAL NO. FROM** – If this column has an (*) and a Reference number, see the SERIAL NUMBERS page in the back of your manual. If column has two asterisk (**), call manufacturer for serial number. The serial number indicates the first machine the part number is applicable to. The main illustration shows the most current design of the machine. When a boxed illustration is shown, it displays the older design.
- **NOTES** – column for information not noted by the other columns.

NOTE: If a service or option kit is installed on your machine, be sure to keep the KIT INSTRUCTIONS which came with the kit. It contains replacement parts numbers needed for ordering future parts.

NOTE: The manual part number is located on the lower right corner of the front cover.

IMPORTANT SAFETY INSTRUCTIONS

When using this machine, basic precaution must always be followed, including the following:
READ ALL INSTRUCTIONS BEFORE USING THIS MACHINE.

⚠ WARNING: To reduce the risk of fire, electric shock, or injury:

- Keep the unit upright at all times when operating or when chemical or gas is inserted.
- The rechargeable battery has been designed to be fully charged BEFORE each use.
- Only use manufacturer approved solution and fuel for the safe operation of the machine. Using other consumable items in the machine invalidates the warranty and will lead to damage of the internal parts of the machine and may pose a risk to the operator.

READ AND SAVE THESE INSTRUCTIONS

CONSIGNES DE SÉCURITÉ IMPORTANTES

Lors de l'utilisation de cette machine, des précautions de base doivent toujours être prises, y compris les précautions suivantes:
LIRE TOUTES LES INSTRUCTIONS AVANT D'UTILISER CETTE MACHINE.

⚠ AVERTISSEMENT: Pour réduire le risque d'incendie, d'électrocution ou de blessure :

- Garder l'appareil en position vertical en tout temps Durant le fonctionnement ou lorsque le produit chimique ou le gaz est inséré.
- La batterie rechargeable a été conçue pour être complètement chargée AVANT chaque utilisation.
- Utiliser uniquement une solution et du carburant approuvés par le fabricant pour le fonctionnement sécuritaire de l'appareil. L'utilisation d'autres articles consommables dans l'appareil annulera la garantie, causera des dommages au niveau des pièces internes de l'appareil et pose un risque pour le fonctionnement.

LIRE ET CONSERVER CES INSTRUCTIONS

The following symbols are used throughout this guide as indicated in their descriptions:

HAZARD INTENSITY LEVEL

There are three levels of hazard intensity identified by signal words **-WARNING** and **CAUTION** and **FOR SAFETY**. The level of hazard intensity is determined by the following definitions:



WARNING - Hazards or unsafe practices which COULD result in severe personal injury or death.



CAUTION - Hazards or unsafe practices which could result in minor personal injury or product or property damage.

FOR SAFETY: To Identify actions which must be followed for safe operation of equipment.

Report machine damage or faulty operation immediately. Do not use the machine if it is not in proper operating condition. Following is information that signals some potentially dangerous conditions to the operator or the equipment. Read this information carefully. Know when these conditions can exist. Locate all safety devices on the machine. Please take the necessary steps to train the machine operating personnel.

FOR SAFETY:

DO NOT OPERATE MACHINE:

Unless Trained and Authorized.

Unless Operation Guide is Read and understood.

In Flammable or Explosive areas.

In areas with possible falling objects

WHEN SERVICING MACHINE:

Avoid moving parts. Do not wear loose clothing; jackets, shirts, or sleeves when working on the machine. Use manufacturer approved replacement parts.

Les symboles suivants sont utilisés dans tout ce manuel, tels que décrits ici :

NIVEAU D'INTENSITÉ DU DANGER

Il existe trois niveaux d'intensité du danger, identifiés par des termes d'avertissement - **AVERTISSEMENT**, **ATTENTION** et **POUR VOTRE SÉCURITÉ**. Le niveau d'intensité du danger est déterminé par les définitions suivantes :

⚠ AVERTISSEMENT:

AVERTISSEMENT - Les dangers ou des pratiques contraires à la sécurité qui **POURRAIENT** entraîner des blessures personnelles ou la mort.

⚠ ATTENTION:

ATTENTION - Les dangers ou des pratiques contraires à la sécurité qui pourraient entraîner des blessures personnelles légères ou des dégâts sur le produit ou d'autres biens.

POUR DES RAISONS DE SÉCURITÉ : Pour identifier les actions qui doivent être exécutées pour un fonctionnement sûr de l'équipement.

Signaler immédiatement tout dommage subi par la machine ou fonctionnement défectueux. Ne pas utiliser la machine si elle ne fonctionne pas correctement. Ci-dessous se trouvent les informations indiquant les conditions potentiellement dangereuses pour l'opérateur ou l'équipement. Lire attentivement ces informations. Être conscient que ces conditions peuvent survenir. Repérer tous les dispositifs de sécurité sur la machine. Suivre les étapes nécessaires de formation du personnel qui utilise la machine.

POUR DES RAISONS DE SÉCURITÉ :

NE PAS FAIRE FONCTIONNER LA MACHINE :

Sauf si le personnel est formé et autorisé.

Sauf si le manuel d'utilisation est lu et compris.

Dans des zones inflammables ou explosives.

Dans des zones contenant des objets susceptibles de tomber

LORS DE L'ENTRETIEN DE LA MACHINE :

Éviter les pièces mobiles. Ne pas porter de vêtements, vestes, chemises ou manches vagues lors de l'entretien de la machine. Utiliser les pièces de rechange approuvées par le fabricant.

Pre-Run Set Up

Unzip backpack.

If there is a used solution bottle in the machine, remove the black cap from the bottle. Remove the used bottle and discard.



Insert a fresh solution bottle into the solution bottle bag. Remove the cap from the solution bottle. Seal the solution bottle with the black cap, inserting the tube all the way to the bottom of the bottle.

Each solution bottle will last for approximately two hours of use.



Screw the two gas cartridges onto the gas valve manifold, ensuring that it is tightly connected. Place the connected gas cartridges into the unit. Ensure that the Main Gas hose is pushed down.

The two gas cartridges will last for approximately eight hours of use.

Turn the two gas valves on by turning the knobs counter clockwise.



Screw a new wire or nylon brush onto the end of the nozzle of the lance.



Make sure that the speed control knob is completely upright. Turn on the machine by pushing the switch to the "ON" position.

After approximately five seconds press and hold the red starter button until you hear the machine ignite, then release.

Turn the speed control knob to "10" until detergent appears at the brush head. Then turn the knob to "0"

Let the boiler heat the detergent for about 60 seconds before continuing.



Turn the speed control knob to number three and wait until the brush starts to steam. The unit will take about 10 seconds to heat up.

The speed control knob will adjust the amount of fluid that is dispensed. The speed control knob can be adjusted depending on the surface type.

Charging the Machine

Plug the charger into the charging port on the machine.

It will take approximately 4 hours for the battery to fully charge.

A fully charged battery will last for 8 hours.

Charger will show a red light while charging and a green light when fully charged.



If charger displays anything other than the listed colors, contact Kärcher North America.



Adjusting the Machine

Unclip waist and chest straps. Loosen shoulder straps and hip belt.

Put on unit by placing arms through shoulder straps and secure and tighten the hip belt.

NOTE: For the most comfort, adjust unit so that the hip belt covers the front hipbones and the bowed-out portion of the back padding rests on the small of the back.



Tighten the shoulder straps to the point where the unit's weight just starts to pull down on the shoulders. Ideally most of the unit's weight will remain on the waist.

Adjust the chest strap position to be high on the chest and tighten till comfortable.



Cleaning Gum

Once the machine has heated up, place the brush on the piece of flattened gum and wait 5-10 seconds.

Agitate the flattened gum with the brush using circular motions until you see gum disintegrate. Do not scrub or apply pressure. The weight of the lance with agitation is all that is required.



Remove the brush from the gum and use a broom to sweep across the area. Determine if all the gum has been removed or if more cleaning is required.

If further cleaning is required, repeat the cleaning steps until gum is completely removed.

Always complete a test patch on surfaces to make sure no damage occurs to the flooring or surface.

End of Use

Turn the switch to "OFF".



Unzip the backpack and turn off the gas valves. Remove the solution bottle and gas cartridges from the machine.



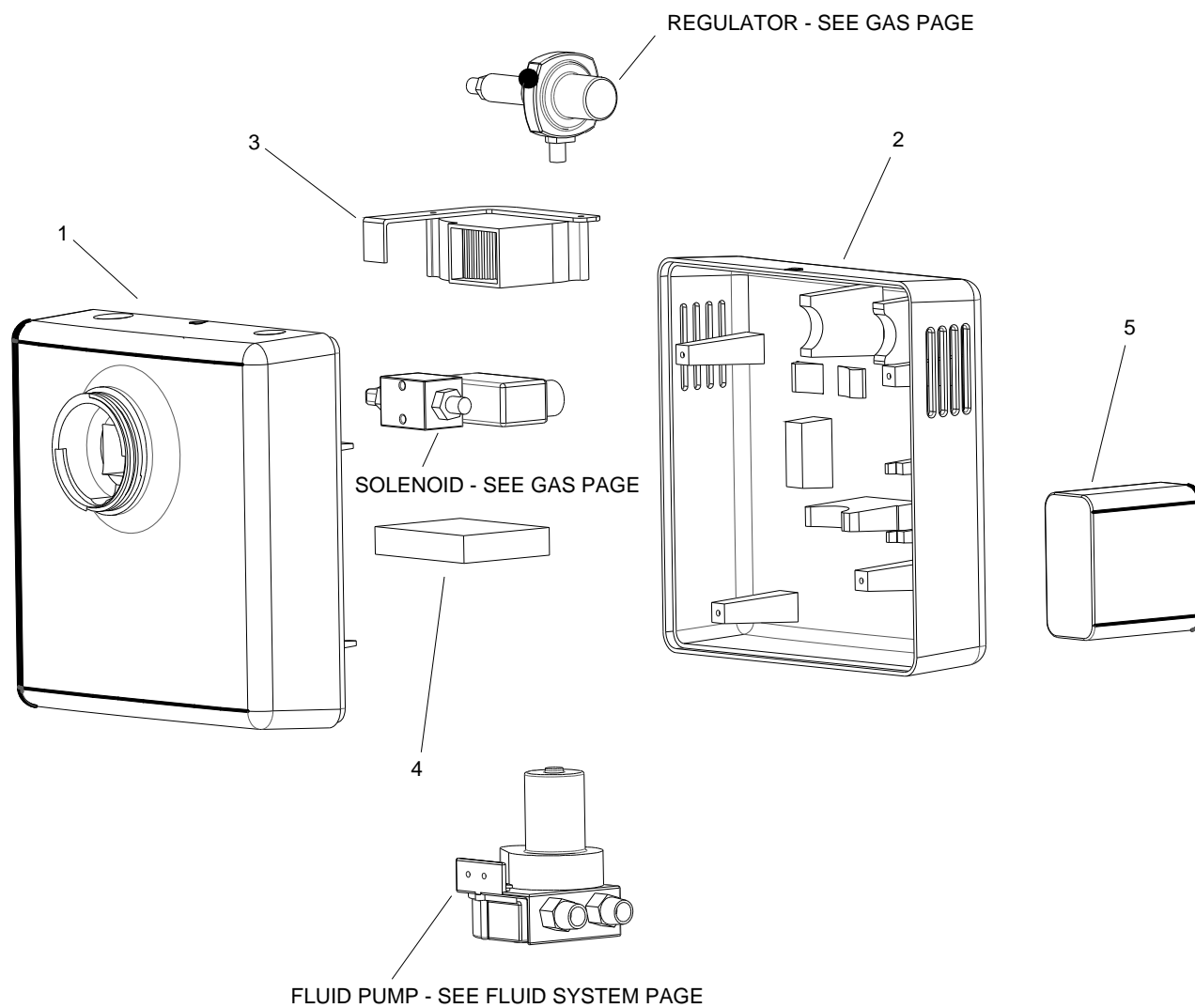
To drain the unit, turn the power switch on. Turn the speed control knob to 10 until there is no fluid coming from the nozzle at the end of the lance. Turn the power switch off.



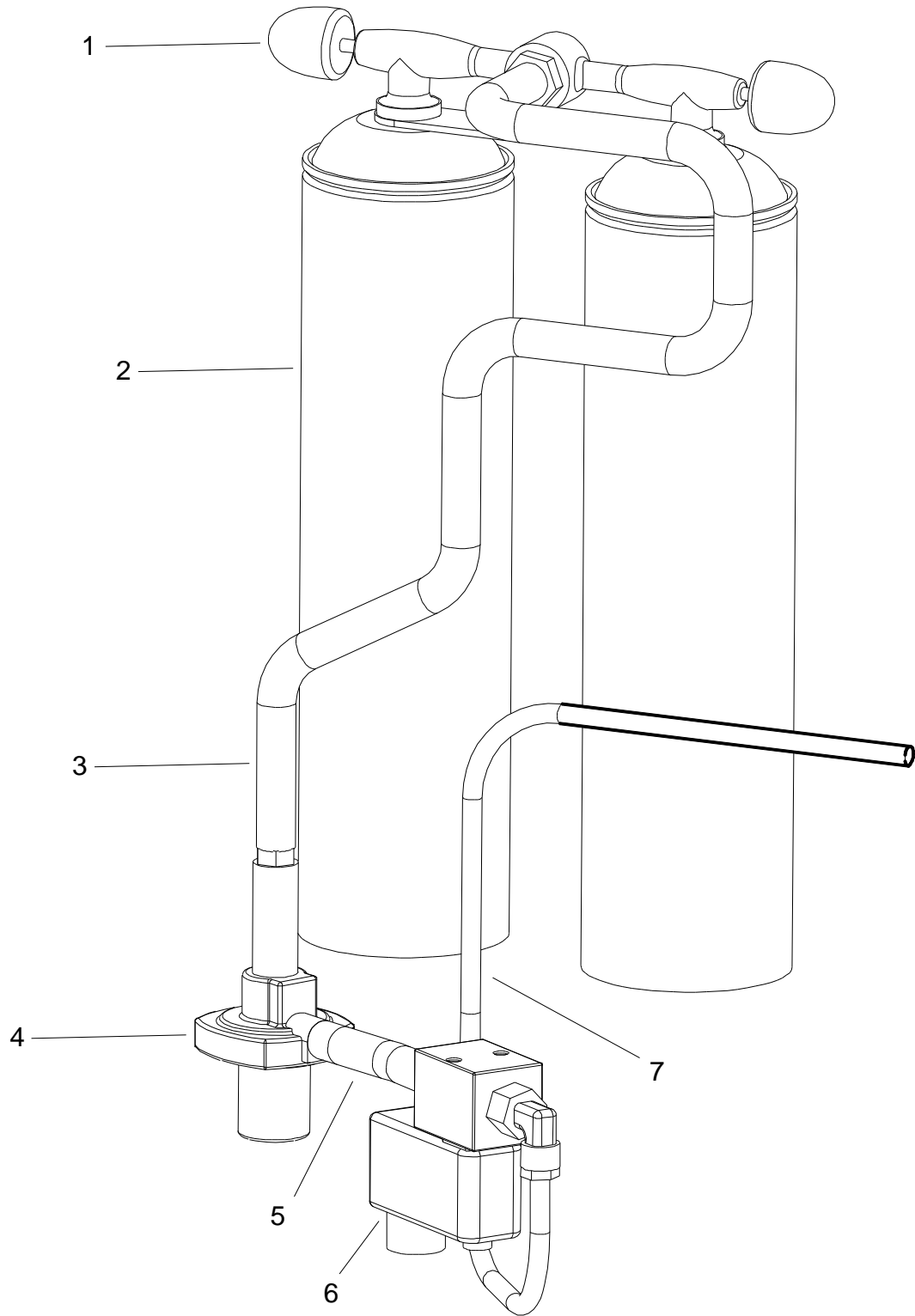
Suggested Spare Parts/Accessories

Part Number	Suggested Spare Parts	Notes
86398710	SERVICE BOX WV1	
-	2x Gas Cartridges	Included with Service Box
-	4x Chemical Bottles	
-	2x Brush, Hard, Black	
86428800	BRUSH, HARD, BLACK, 2 PACK	
86429310	BRUSH SOFT GREEN 2 PACK	
86398280	CHARGER	
86398370	PUMP CONTROL CABLE ASSEMBLY	
Part Number	Accessories	Notes
86405890	SG2 LANCE ROLLER	

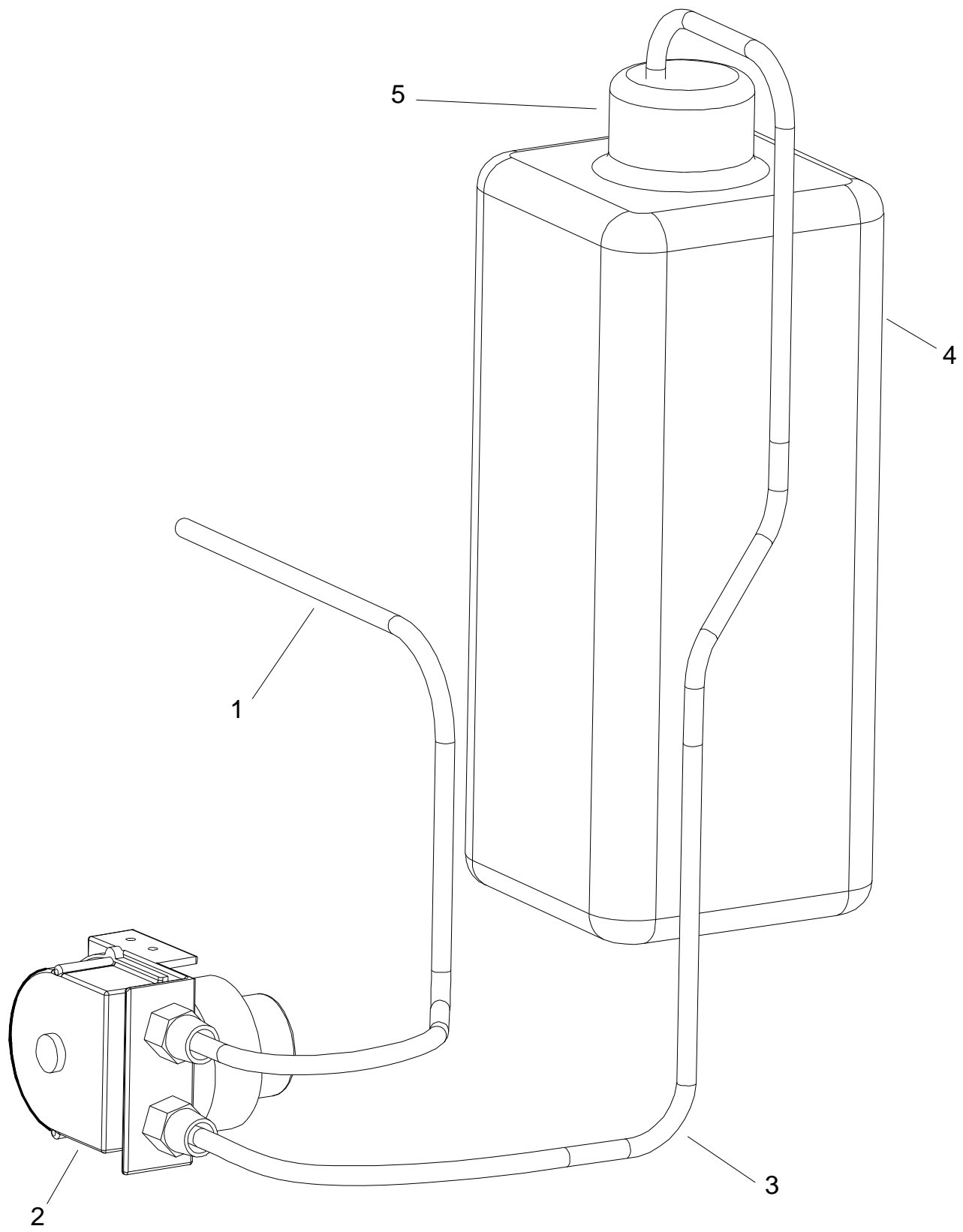
PARTS



REF	PART NO.	QTY	DESCRIPTION	SERIAL NO. FROM	NOTES
1	86385220	1	FRONT CASE, SG1		
2	86385230	1	BACK CASE, SG1		
3	86398320	1	BLOWER FAN		
4	86385240	1	PCB, SG1		
5	86385210	1	BATTERY, 8 CELL		
6	86385250	1	CANVAS, BACKPACK, SG1		NOT SHOWN
-	86398460	1	LANCE INCLUDING EVA HOSE		NOT SHOWN
-	86428360	1	STRETCH HOSE, GUM REMOVER		NOT SHOWN



REF	PART NO.	QTY	DESCRIPTION	SERIAL NO. FROM	NOTES
1	86398390	1	GAS BOTTLE TAPS		
2	-	2	GAS BOTTLE		FROM KIT 86398710
3	86398400	1	MAIN GAS PIPE 500MM		
4	86398380	1	GAS REGULATOR		
5	86398410	1	SMALL GAS PIPE 65MM		
6	86385260	1	SOLENOID ASSY, SG1		
7	86398420	1	SMALL GAS TO LANCE 2300MM		



REF	PART NO.	QTY	DESCRIPTION	SERIAL NO. FROM	NOTES
1	86398450	1	FLUID PIPE OUT		
2	86398430	1	FLUID PUMP		
3	86398440	1	FLUID PIPE IN		
4	-	1	FLUID BOTTLE		FROM KIT 86398710
5	86425960	1	FLUID BOTTLE CAP		

Serial Number

REF. NO.	MODEL: SERIAL #
1	**

